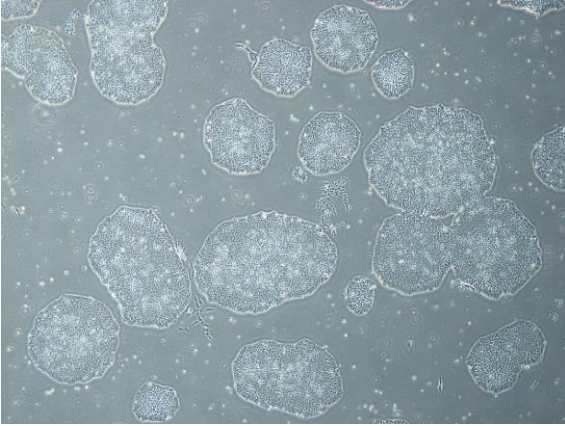
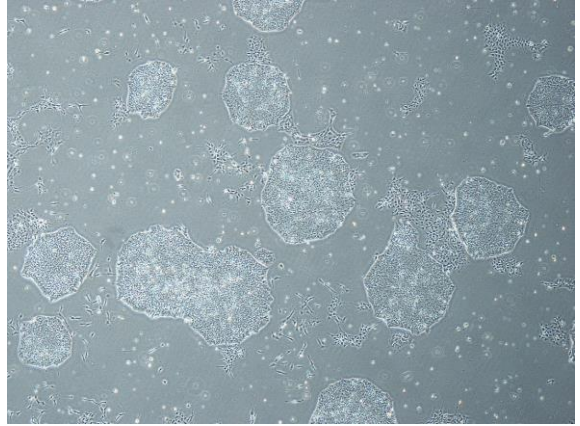


## 【 CiRA-j-1460 】 Morphology of iPSC colonies

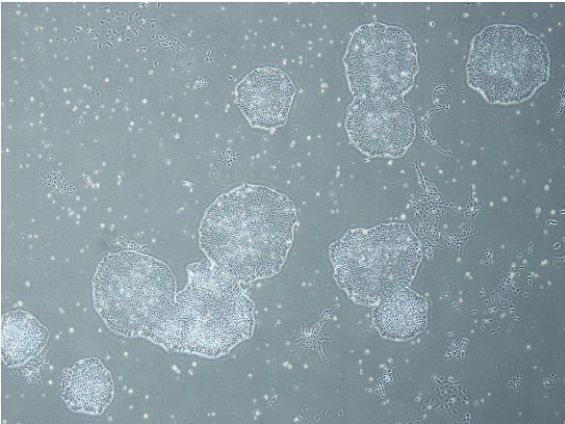
CiRA-j-1460-A: passage-3



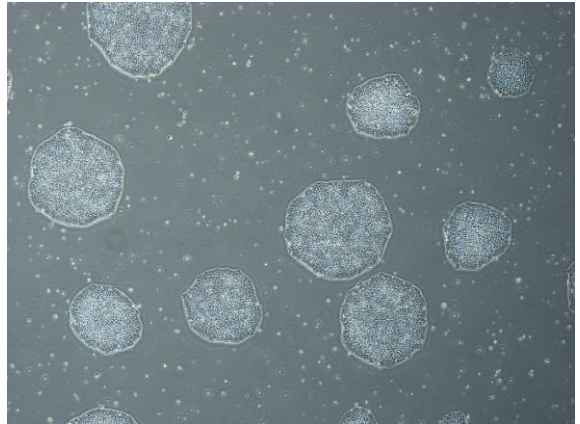
CiRA-j-1460-B: passage-3



CiRA-j-1460-C: passage-3



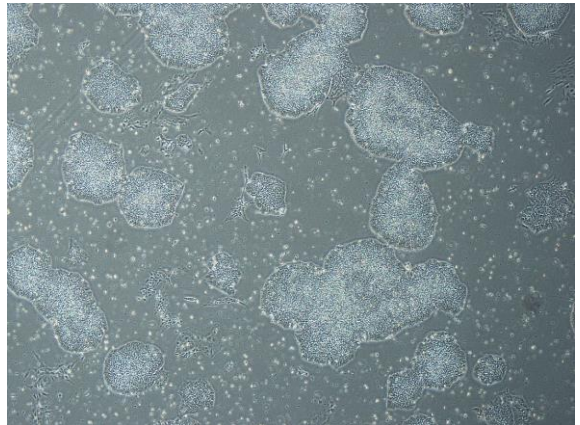
CiRA-j-1460-D: passage-3



CiRA-j-1460-E: passage-3



CiRA-j-1460-F: passage-4



( All images were captured at 4x magnification )